

1. Prelude

Great Bass Recorder

Suite No. 1 for Recorder Orchestra

Brian Blood

3



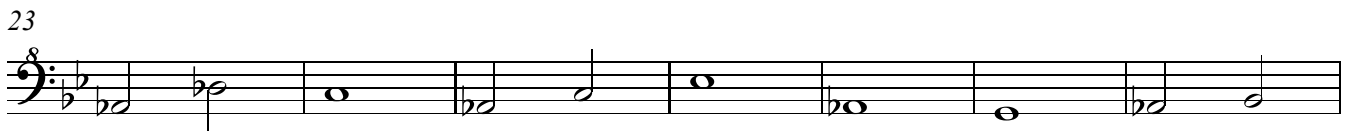
9



16



23



30

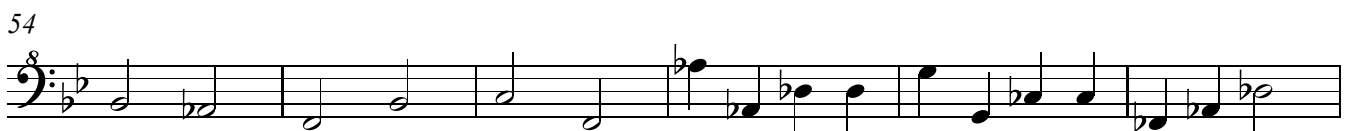
12



47



54



60



65

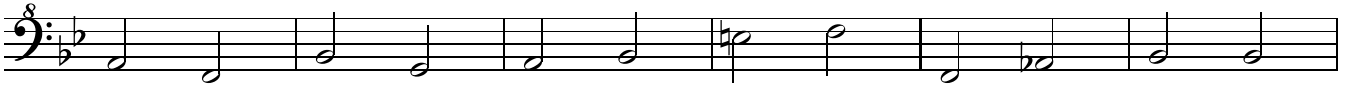
4



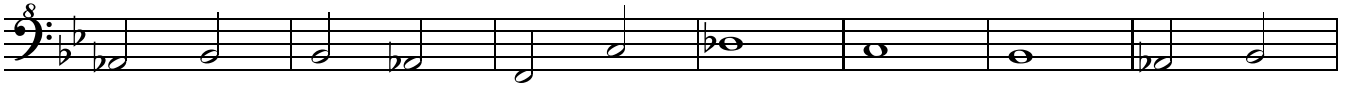
Great Bass Recorder
Suite No. 1 for Recorder Orchestra

2

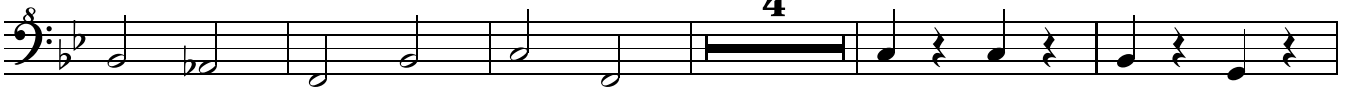
73



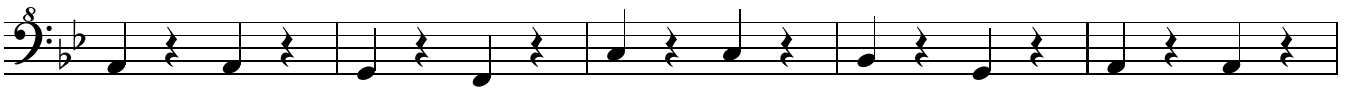
79



86



95



100



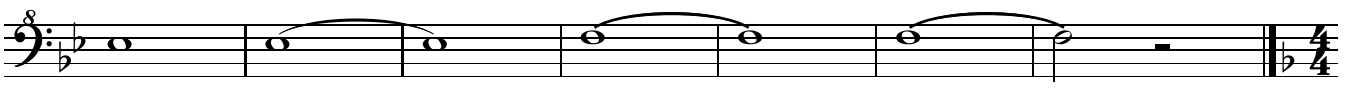
108



114



121



Great Bass Recorder
Suite No. 1 for Recorder Orchestra

2. Morning Fair

$\text{♩} = 162$

10



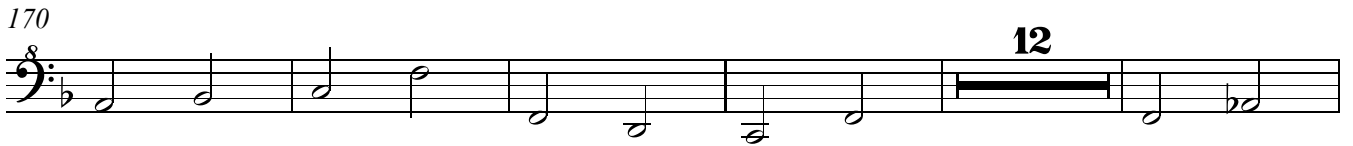
143



164



170



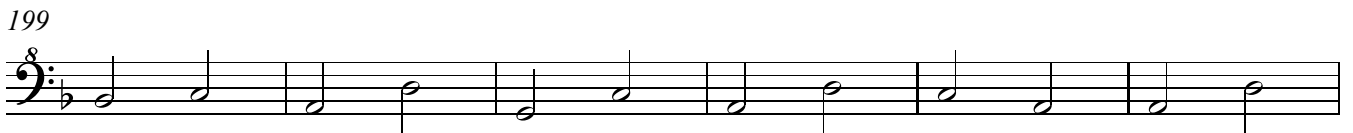
187




193



199



205



214



Great Bass Recorder
Suite No. 1 for Recorder Orchestra

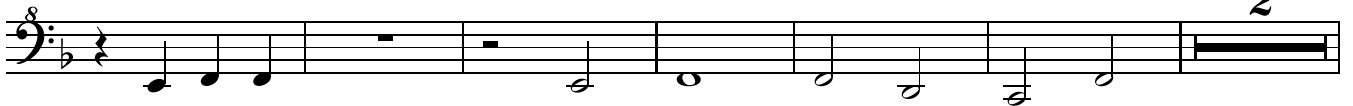
4

227



242

♩ = 152



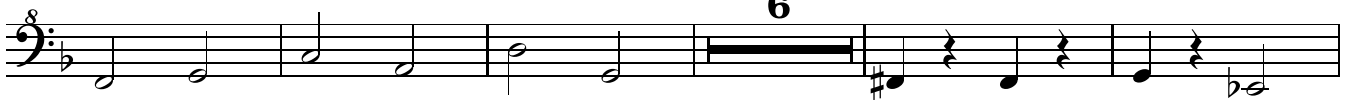
250

♩ = 162



259

6



270

♩ = 152



276



282



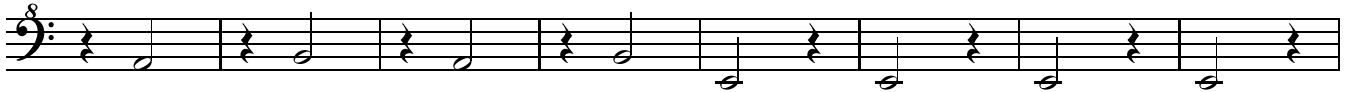
Great Bass Recorder
Suite No. 1 for Recorder Orchestra

3. Reverie

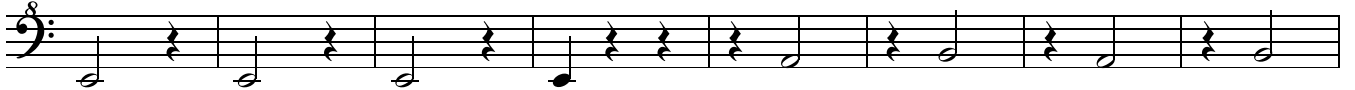
♩ = 120



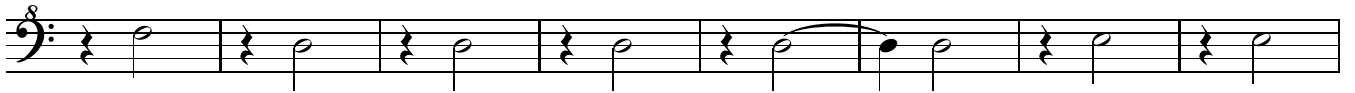
297



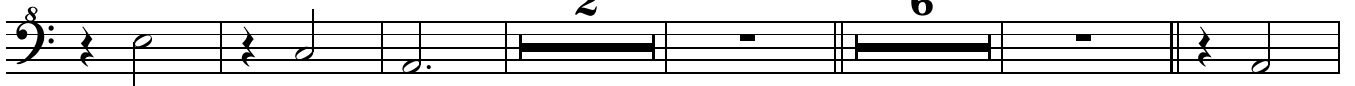
305



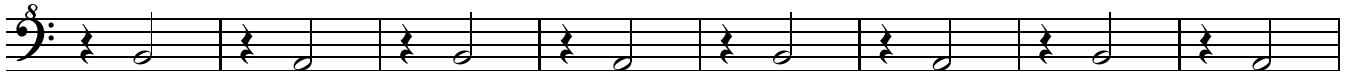
313



321



335



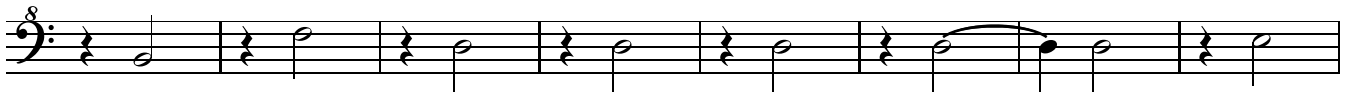
343



350



357



365



375



4. Walking Tune

♩ = 120

8

395

401

407

413

420

426

21

452

458

464

470

30

Great Bass Recorder
Suite No. 1 for Recorder Orchestra

506



512



518



524



530



566



572



578



584



588



Great Bass Recorder
Suite No. 1 for Recorder Orchestra

8

593



599



605



618



624



630



636

