

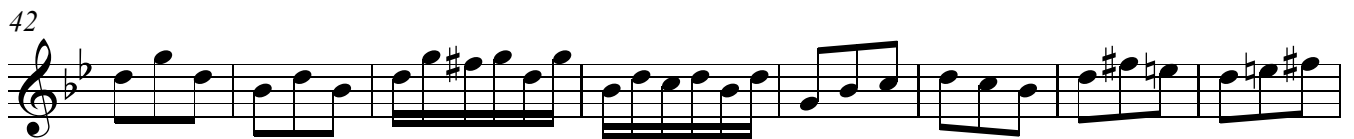
# Concerto no. 14 in G minor

Treble Recorder

$\text{♩} = 180$

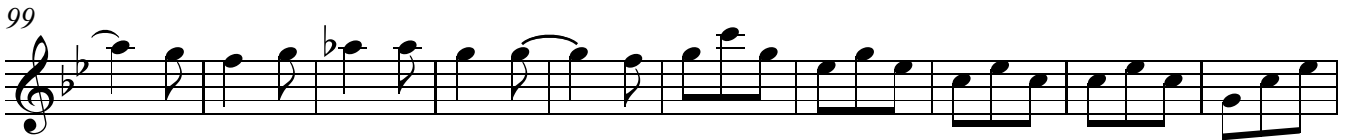
1. Allegro

J.S. Bach  
after Georg Philipp Telemann



2 77

Treble Recorder



♩ = 52

2. Adagio

Musical staff 1 for Adagio, measures 1-5. The staff is in treble clef with a key signature of two flats (B-flat and E-flat) and a common time signature (C). The music consists of quarter notes with stems pointing up, followed by rests. A dynamic marking of *p* (piano) is placed below the first measure.

Musical staff 2 for Adagio, measures 6-10. The staff continues the sequence of quarter notes with stems pointing up, followed by rests.

Musical staff 3 for Adagio, measures 11-14. The music begins with a slur over the first two measures, which contain eighth notes. This is followed by quarter notes with stems pointing up and rests.

Musical staff 4 for Adagio, measures 15-18. The music continues with quarter notes and rests, ending with a double bar line.

♩ = 80

3. Allegro

Musical staff 1 for Allegro, measures 1-5. The staff is in treble clef with a key signature of two flats and a common time signature. The music starts with a rest, followed by eighth notes with stems pointing up, and then quarter notes. A dynamic marking of *mf* (mezzo-forte) is placed below the first measure.

Musical staff 2 for Allegro, measures 6-9. The music features eighth notes with stems pointing up, quarter notes, and eighth notes with stems pointing down.

Musical staff 3 for Allegro, measures 10-14. The music includes eighth notes with stems pointing up, quarter notes, and eighth notes with stems pointing down.

Musical staff 4 for Allegro, measures 15-17. The music continues with eighth notes with stems pointing up, quarter notes, and eighth notes with stems pointing down.

Musical staff 5 for Allegro, measures 18-21. The music features eighth notes with stems pointing up, quarter notes, and eighth notes with stems pointing down, ending with a double bar line.

4 22

Treble Recorder

