

Great Bass (Ch 2)

Canzona No. 2

Giovanni Gabrieli (c.1555-1612)

$\text{♩} = 60$

21



27



33

$\text{♩} = 150$



$\text{♩} = 60$

41



48

8



61



67



73

$\text{♩} = 150$



$\text{♩} = 60$

82



89



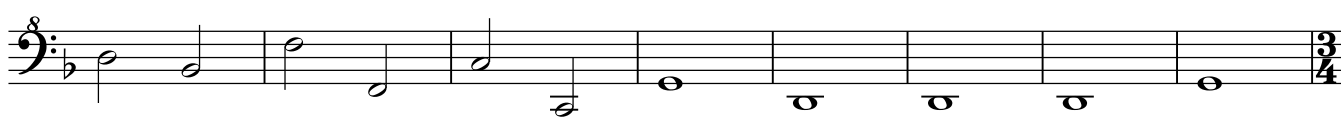
96



105



113



121 ♩ = 150

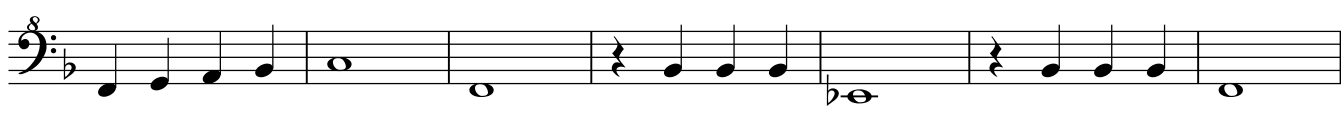


128

♩ = 60



135



142



148

