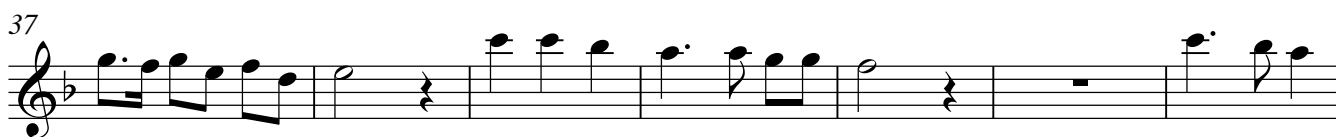
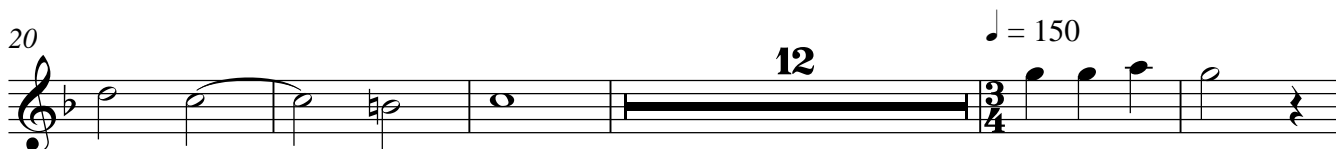
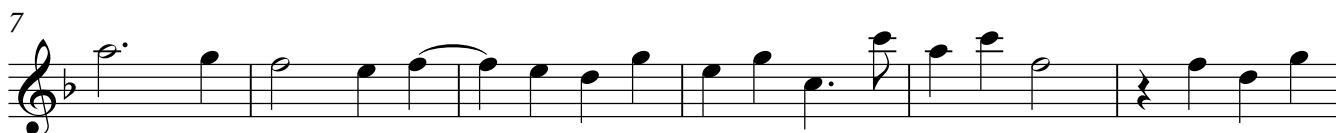


Treble (Ch 1)

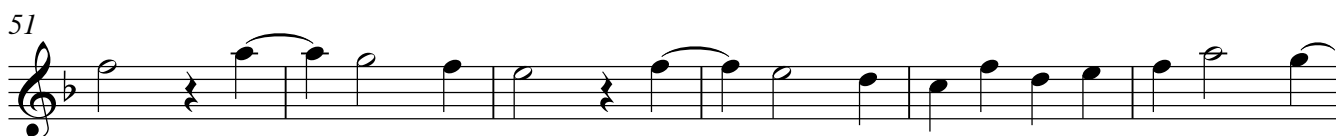
Canzona No. 2

Giovanni Gabrieli (c.1555-1612)

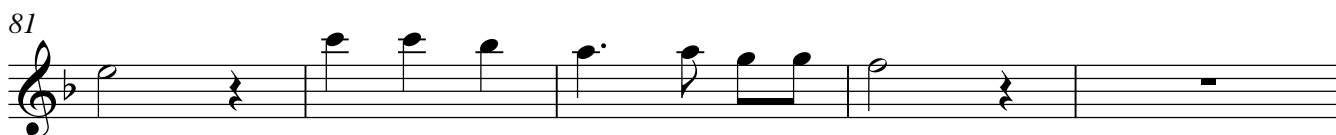
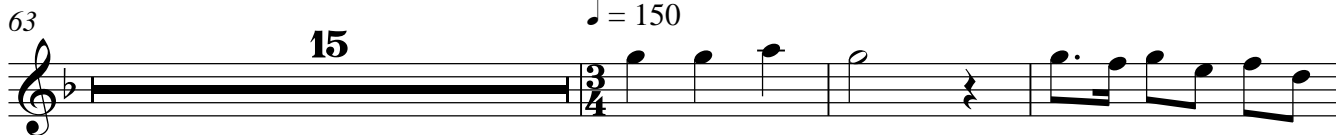
$\text{♩} = 60$



$\text{♩} = 60$



$\text{♩} = 150$



Treble (Ch 1)

♩ = 60

86

94

103

109

115

♩ = 150

120

♩ = 60

128

136

143

149