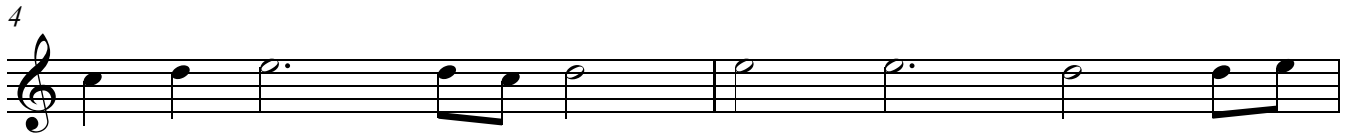


Suite No. 1

J. H. Schein (1586–1630)

Descant 1
♩ = 54

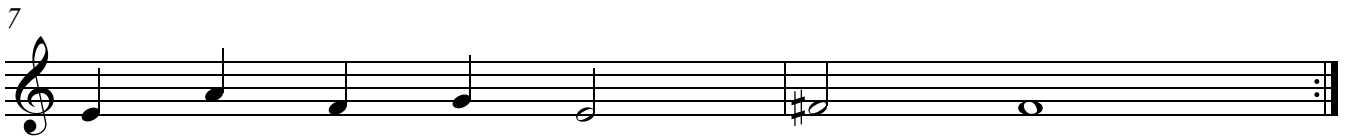
Padouana



2

Descant 1
Gagliarda

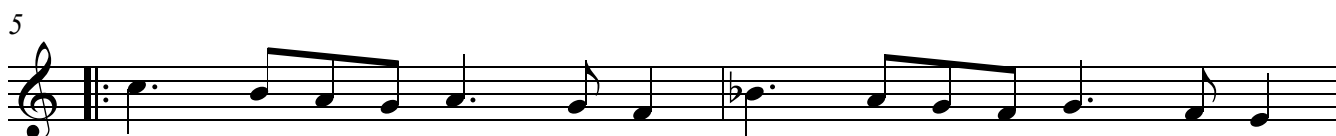
$\text{♩} = 90$



Descant 1

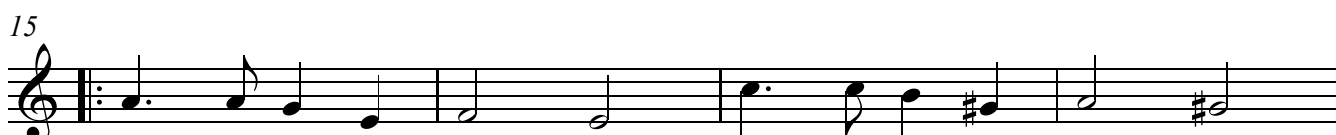
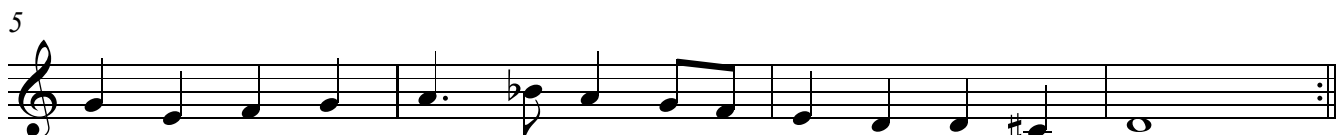
Courente

♩. = 56



♩ = 120

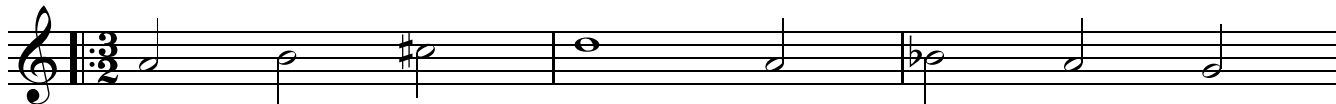
Allemande & Tripla



Descant 1

4

23 ♩ = 150



26



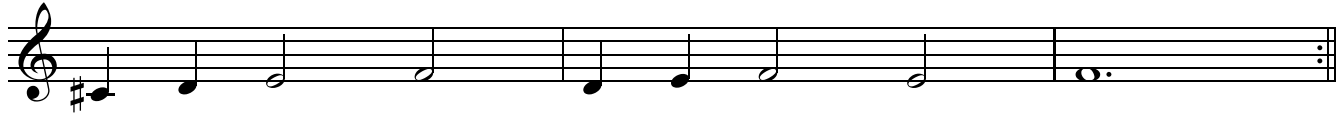
29



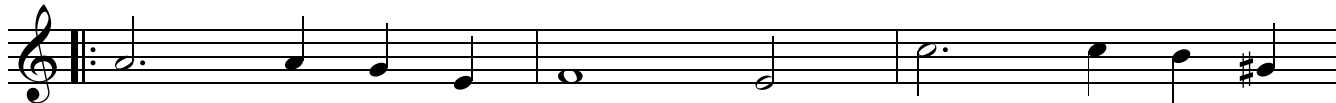
31



34



37



40



43

