

Suite No. 1

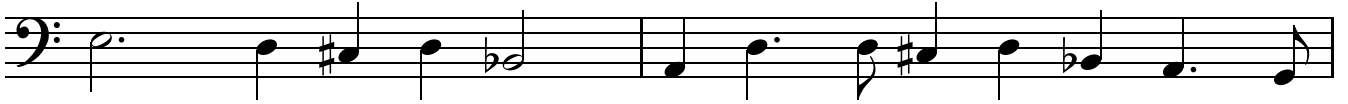
J. H. Schein (1586–1630)

Great Bass
♩ = 54

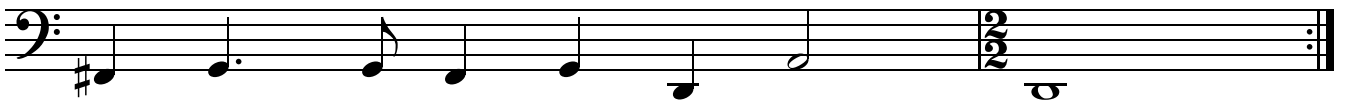
Padouana



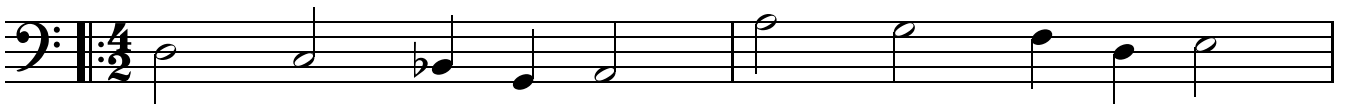
5



7



9



11



15



17



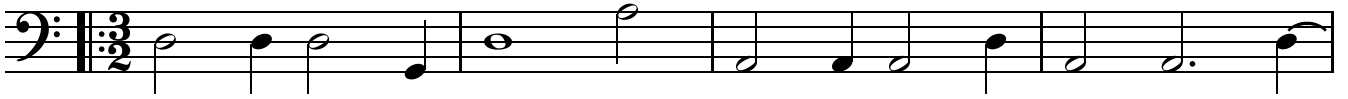
19



2

♩ = 90

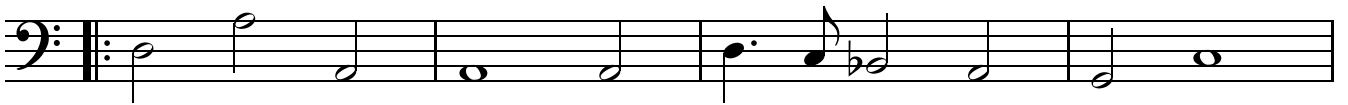
Great Bass Gagliarda



5



9



13



17



21



♩ = 56

Courente



5



7

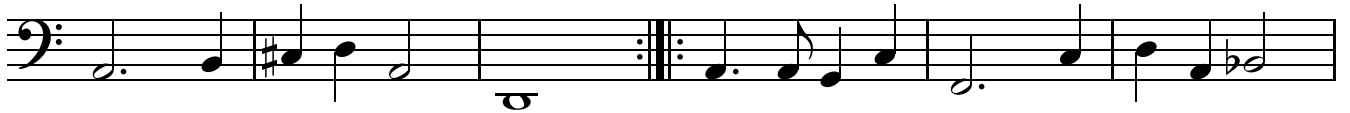


Great Bass
Allemande & Tripla

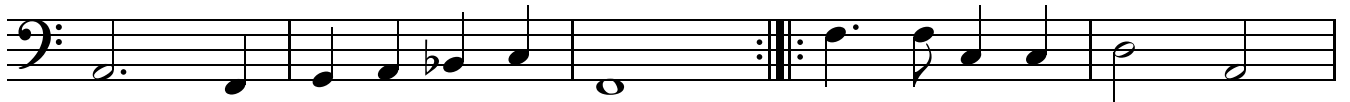
♩ = 120



6



12



17



23 ♩ = 150



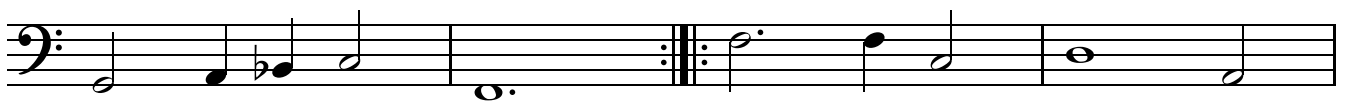
27



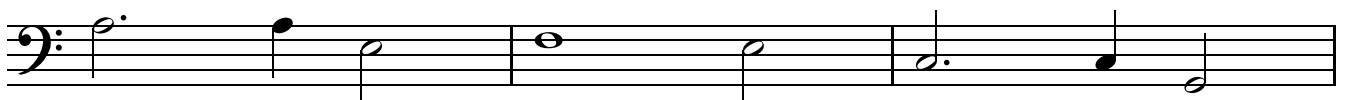
31



35



39



42

