

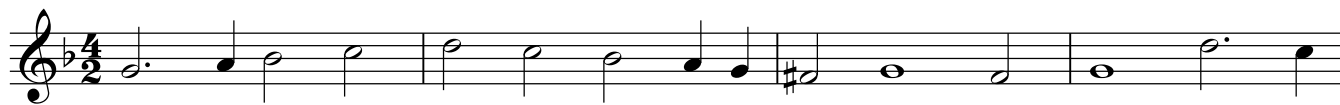
Descant Recorder 1

# Suite No. 13

J. H. Schein (1586-1630)

## Padouana

$\text{♩} = 60$



## Gagliarda

$\text{♩} = 90$



Descant Recorder 1

9



13



17



21



♩ = 180

Courente




5



9



11

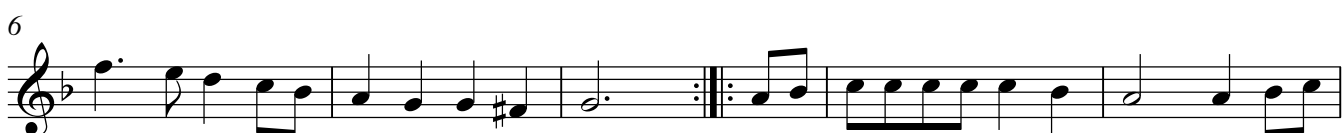


♩ = 160

Allemande & Tripla



6



11



Descant Recorder 1

17



Musical staff with treble clef, key signature of one flat (Bb), and a repeat sign. The melody consists of eighth and quarter notes.

22



Musical staff with treble clef, key signature of one flat (Bb), and a repeat sign. The melody includes dotted notes and a sharp sign.

25  $\text{♩} = 160$



Musical staff with treble clef, key signature of one flat (Bb), and a 3/2 time signature. It includes a tempo marking.

30 33



Musical staff with treble clef, key signature of one flat (Bb), and a repeat sign. The melody includes dotted notes and a sharp sign.

34



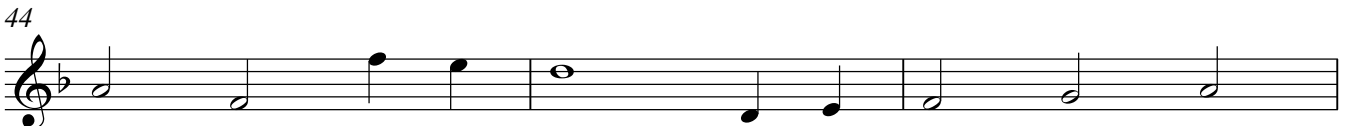
Musical staff with treble clef, key signature of one flat (Bb). The melody consists of eighth and quarter notes.

39 41



Musical staff with treble clef, key signature of one flat (Bb), and a repeat sign. The melody includes dotted notes and a sharp sign.

44



Musical staff with treble clef, key signature of one flat (Bb). The melody consists of quarter and eighth notes.

47



Musical staff with treble clef, key signature of one flat (Bb), and a repeat sign. The melody includes dotted notes and a sharp sign.