

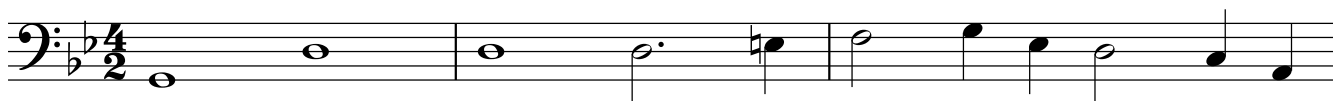
Great Bass Recorder

# Suite No. 17

J. H. Schein (1586-1630)

## Padouana

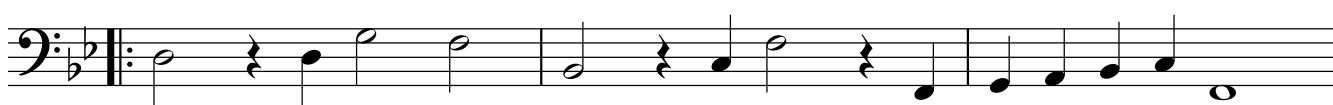
$\text{♩} = 56$



4



7



10



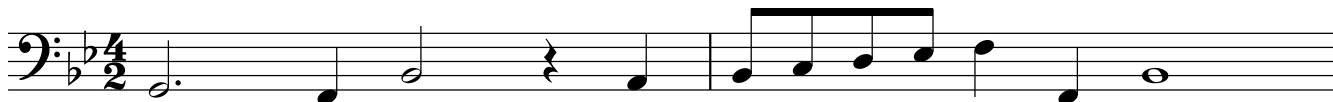
13

$\text{♩} = 160$



17

$\text{♩} = 56$



19



$\text{♩} = 80$

## Gagliarda



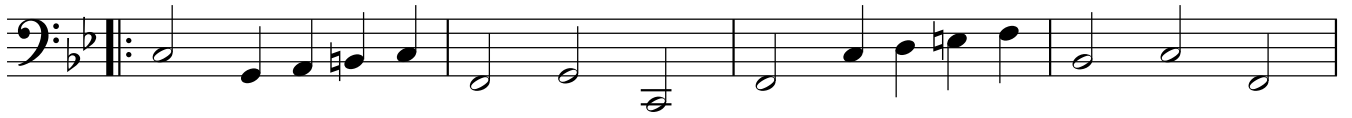
5



# Great Bass Recorder

2

9



13



17



21



♩ = 130

## Courente



5



10



14



16



# Great Bass Recorder

♩ = 120

## Allemande & Tripla



5



9



13



17

♩ = 120



21



25



29

