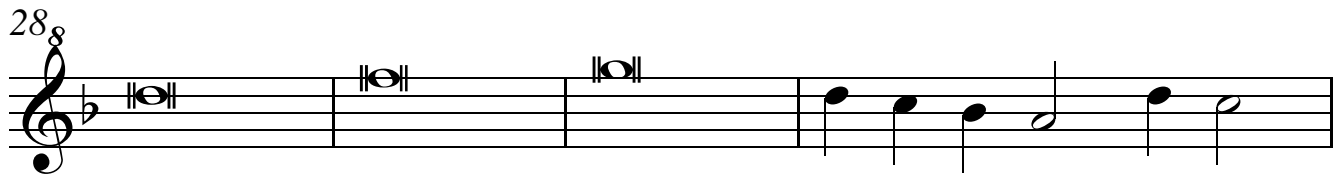
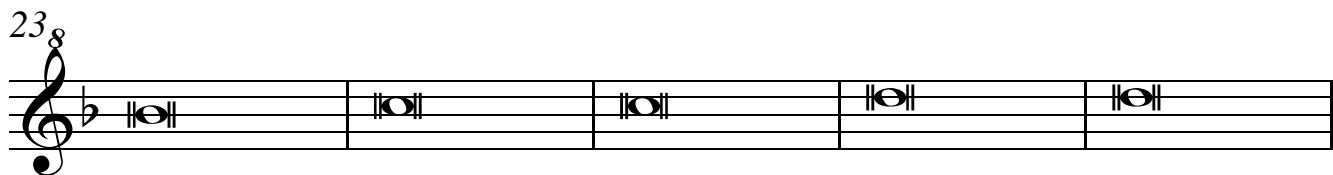
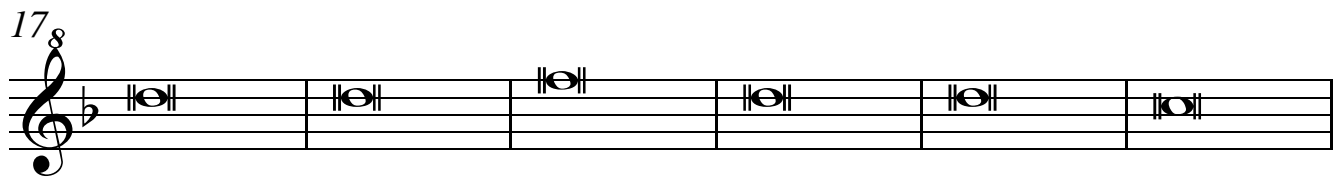
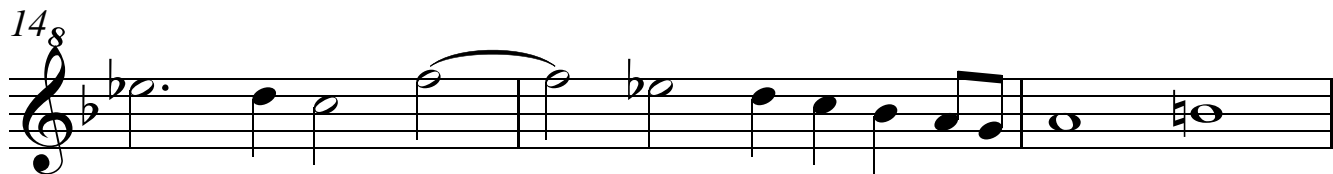
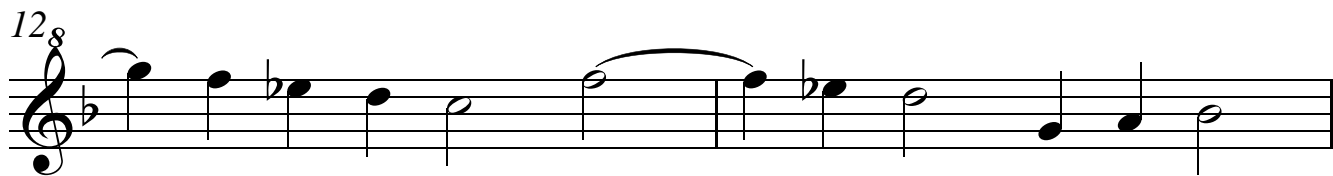
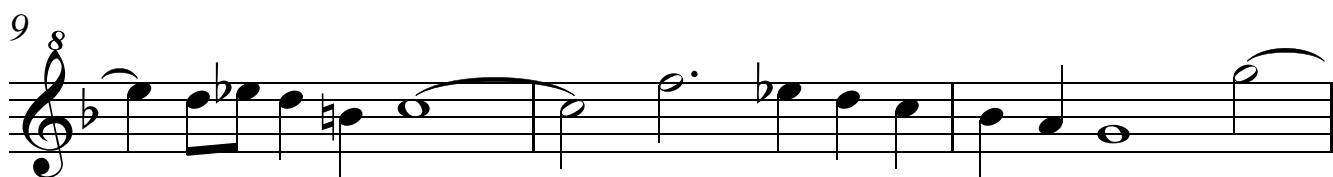
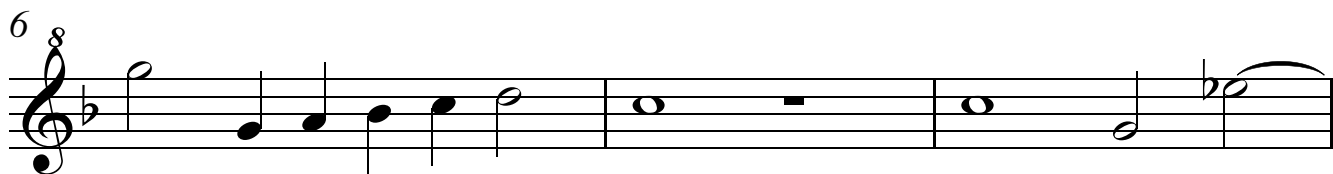


Descant 1

In Nomine No.1

John Ward (1571-1638)

Arr. by Alan Lane



2 32⁸ Descant 1

35⁸

37⁸

39⁸

41⁸

43⁸

45⁸

51⁸

56⁸

Detailed description: This musical score is for a piece in G minor, 8/8 time. It consists of nine staves of music. The first staff (measures 32-34) begins with a treble clef, a key signature of one flat, and a common time signature of 8. The melody starts with a quarter note G4, followed by eighth notes A4 and B4, a dotted quarter note C5, a quarter note D5, a half note E5, and a quarter note F5. The second staff (measures 35-36) continues the melody with a half note G5, a quarter rest, a quarter note A5, and a series of eighth notes: B5, C5, D5, E5, F5, G5, A5, B5. The third staff (measures 37-38) features a more complex melodic line with eighth and quarter notes, including a chromatic descent from A5 to G5. The fourth staff (measures 39-40) shows a sequence of eighth notes: G4, A4, B4, C5, D5, E5, F5, G5. The fifth staff (measures 41-42) continues with eighth notes: A5, B5, C5, D5, E5, F5, G5, A5. The sixth staff (measures 43-44) has eighth notes: B5, C5, D5, E5, F5, G5, A5, B5. The seventh staff (measures 45-50) consists of six measures of whole notes, each marked with a repeat sign and containing a single note: G4, A4, B4, C5, D5, E5. The eighth staff (measures 51-55) also consists of five measures of whole notes with repeat signs: G4, A4, B4, C5, D5. The ninth staff (measures 56-59) consists of four measures of whole notes with repeat signs: E5, F5, G5, A5.