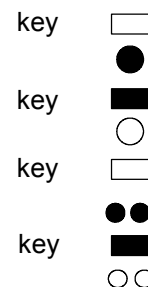
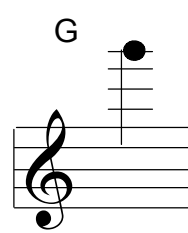
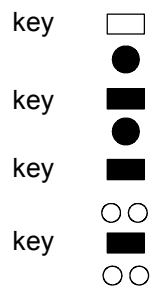
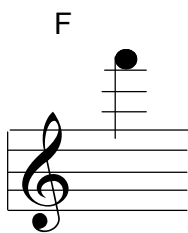
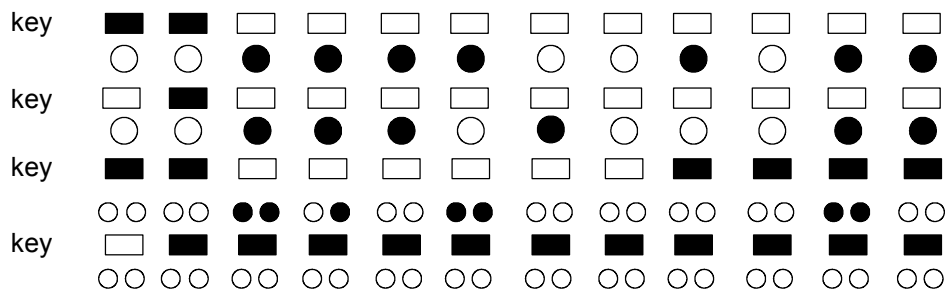
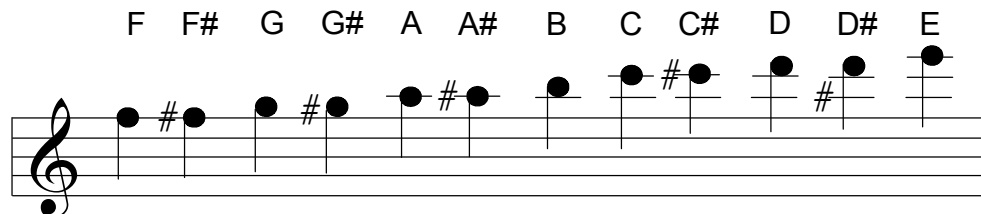
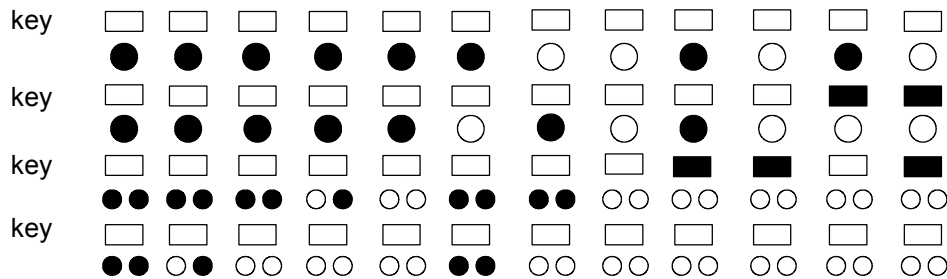
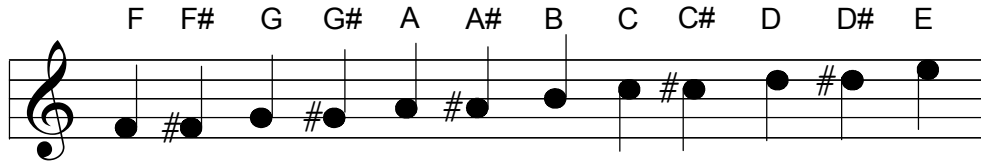


FINGERING FOR THE GOLD SERIES TREBLE RECORDER FOR THE LEFT HAND



High F sharp fingering is the same as for high G but the recorder bell is closed with the knee.
High D sharp (finger 3) and top F (finger 2) use the bar as well as the covered hole.

Key: White Circle - Finger hole uncovered	Black Circle - Finger hole covered
White Rectangle - Key uncovered	Black Rectangle - Key depressed