

# 1. Prelude

Bass Recorder 2

Suite No. 1 for Recorder Orchestra

Brian Blood

8 **2**

9

15 **16**

37

42 **2**

49

56 **4**

65 **4**

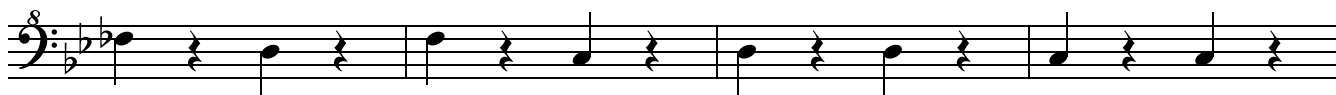
74

80

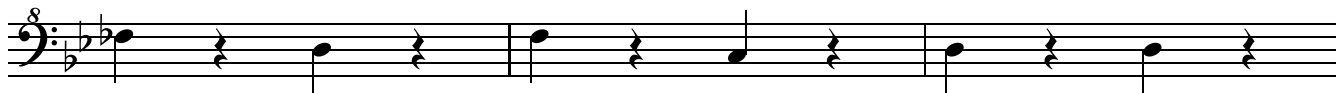
84 **4**

Bass Recorder 2  
Suite No. 1 for Recorder Orchestra

93



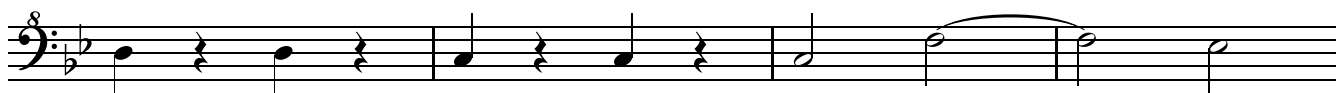
97



100



107



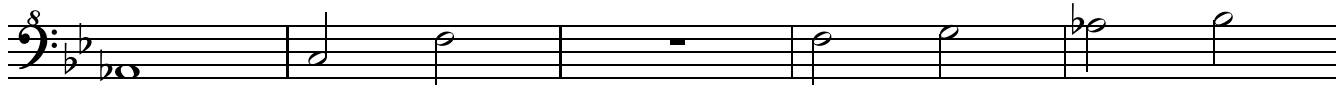
111



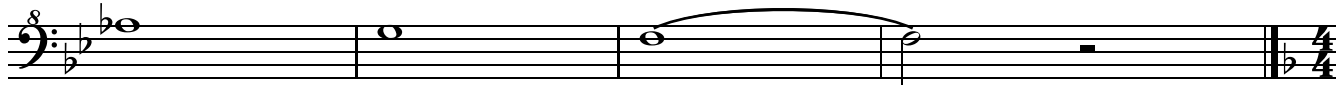
115



119



124



Bass Recorder 2  
Suite No. 1 for Recorder Orchestra

## 2. Morning Fair

♩ = 162



133



138



143



148



153



165



170



Bass Recorder 2  
Suite No. 1 for Recorder Orchestra

186



191



196



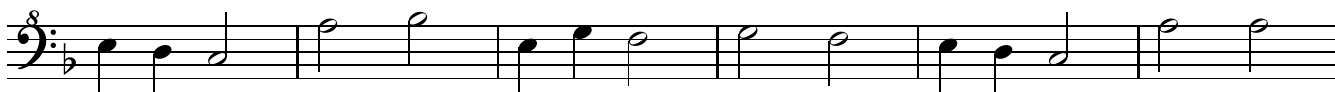
201



206



211



217



223



229



234



239



Bass Recorder 2  
Suite No. 1 for Recorder Orchestra

244

$\text{♩} = 152$



250



256

$\text{♩} = 162$



261



270

$\text{♩} = 152$



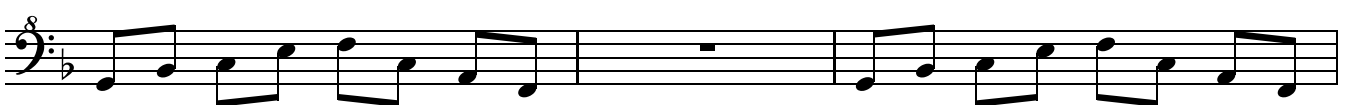
274



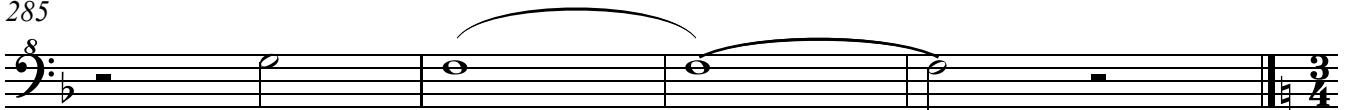
278



282



285



Bass Recorder 2  
Suite No. 1 for Recorder Orchestra

### 3. Reverie

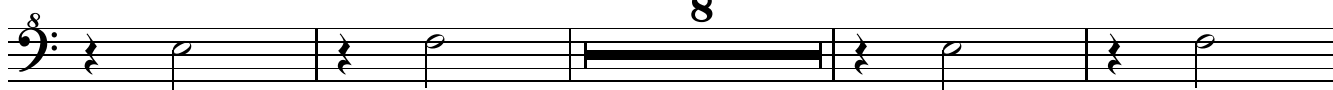
♩ = 120



294



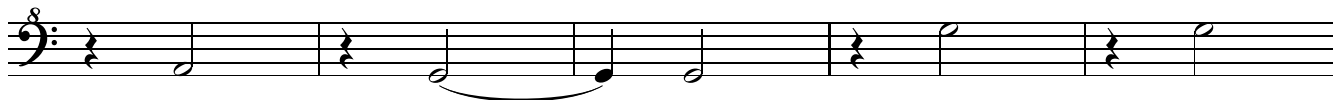
299



311



316



321

♩ = 164



331

♩ = 120



Bass Recorder 2  
Suite No. 1 for Recorder Orchestra

337



342



354



359



364



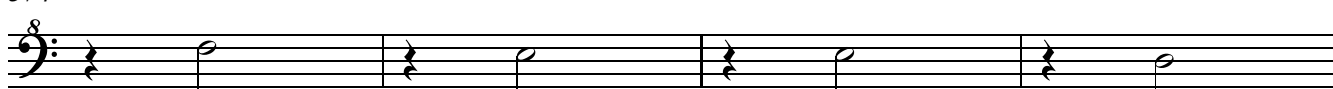
369

♩ = 116



374

♩ = 112



378

♩ = 108



Bass Recorder 2  
Suite No. 1 for Recorder Orchestra

## 4. Walking Tune

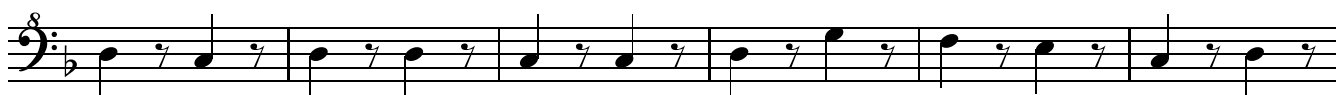
♩. = 120



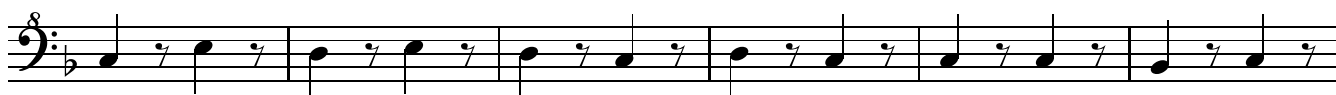
395



401



407



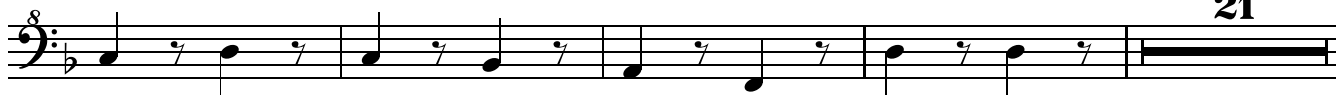
413



419



423



21



Bass Recorder 2  
Suite No. 1 for Recorder Orchestra

448



454



460



466



472



9

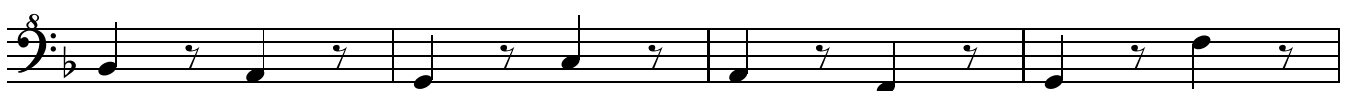
486



492



498



502



Bass Recorder 2  
Suite No. 1 for Recorder Orchestra

10

506



512



518



524



530



565



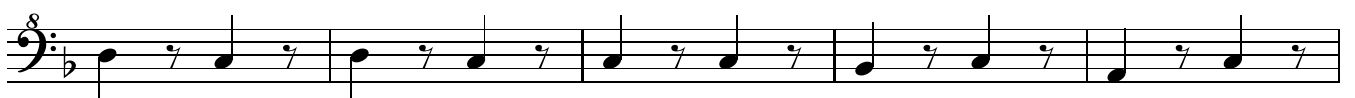
571



577



583



588

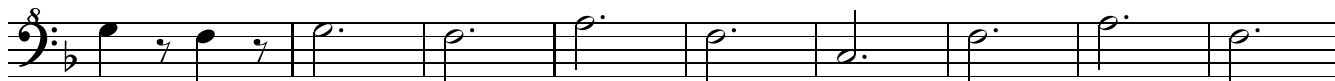


Bass Recorder 2  
Suite No. 1 for Recorder Orchestra

593



599



608



621



627



633



638

