

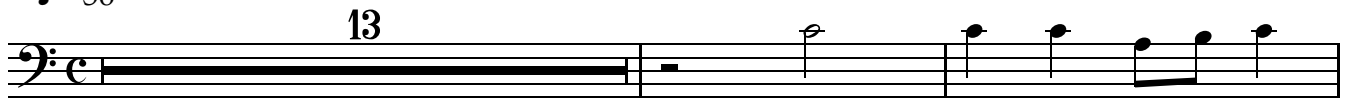
Ach Gott, mir manches Herzeleid

Bass

BWV 3

J.S. Bach
(1685-1750)

$\text{♩} = 56$



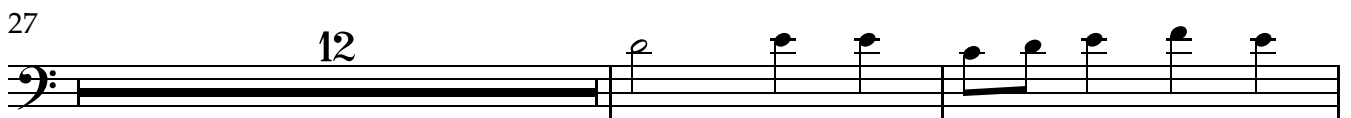
Ach Gott, wie man - ches



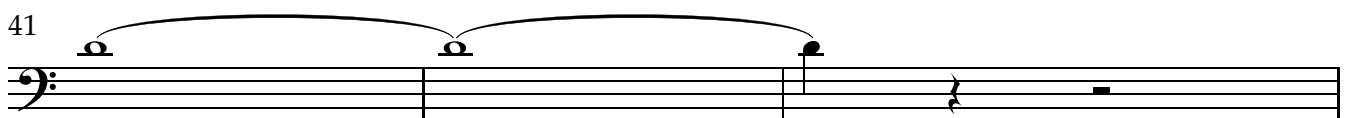
Her - ze - leid_____



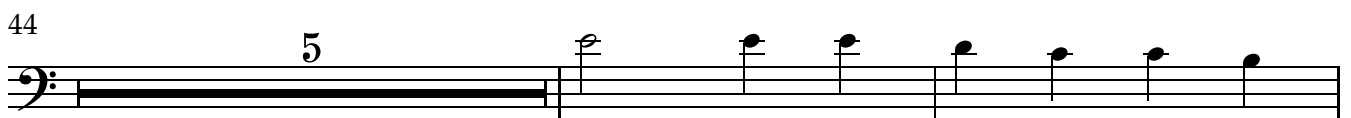
be - geg - net mir zu__ die - ser Zeit!_____



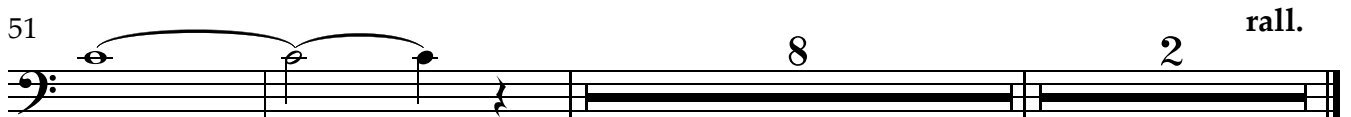
Der schma - le Weg_ ist trüb - sal -



voll,_____



den ich zum Him - mel wan - dern



soll._____

rall.