

Sinfonia No. 1

Domenico Scarlatti

1. Grave

♩ = 88

4

mf

Musical notation for measures 1-4 of the first movement. The music is in bass clef with a common time signature (C). It features a series of eighth and sixteenth notes with rests, creating a rhythmic pattern. The dynamic marking *mf* is indicated below the staff.

7

Musical notation for measures 5-7 of the first movement. The music continues with eighth and sixteenth notes. At measure 7, there is a change in time signature to 2/4, indicated by a double bar line and the new signature.

2. Presto

7

4 3

Musical notation for measures 8-18 of the second movement. The music is in bass clef with a 3/4 time signature. It features a series of eighth and sixteenth notes. There are two first endings marked with '4' and '3' above the staff.

19

Musical notation for measures 19-25 of the second movement. The music continues with eighth and sixteenth notes in 3/4 time.

26

Musical notation for measures 26-31 of the second movement. The music continues with eighth and sixteenth notes in 3/4 time.

32

1. 2.

Musical notation for measures 32-36 of the second movement. It includes a first ending (marked '1.') and a second ending (marked '2.'). The first ending leads back to the beginning of the section, while the second ending concludes the section.

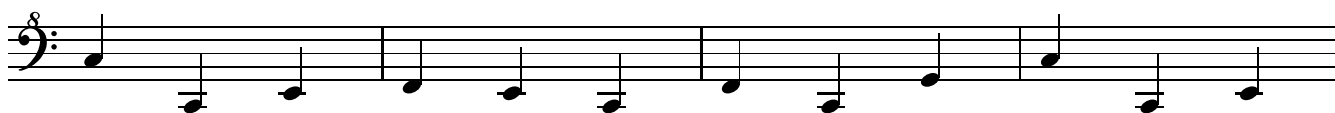
37

Musical notation for measures 37-43 of the second movement. The music continues with eighth and sixteenth notes in 3/4 time.

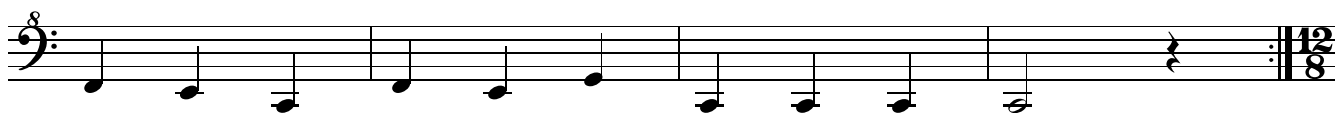
44

Musical notation for measures 44-50 of the second movement. The music continues with eighth and sixteenth notes in 3/4 time.

51



55



59

♩ = 68

3. Adagio



61



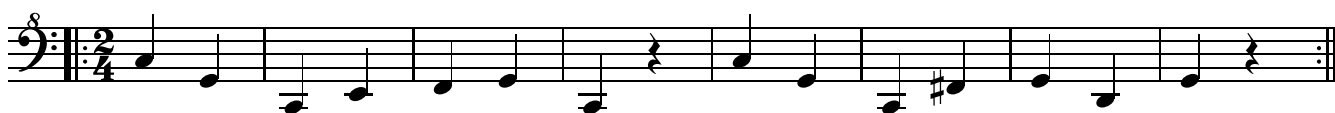
64



67

♩ = 100

4. Allegrissimo presto



75

