

# Sinfonia No. 1

Domenico Scarlatti

## 1. Grave

♩ = 88

Musical notation for measures 1-3 of the first movement. The music is in common time (C) and begins with a mezzo-forte (*mf*) dynamic. The first measure contains a half note G4, a quarter rest, a quarter note A4, a quarter note B4, and a quarter note C5. The second measure contains a half note D5, a quarter rest, a quarter note E5, a quarter note F5, and a quarter note G5. The third measure contains a half note A5, a quarter rest, a quarter note B5, a quarter note C6, and a quarter note B5.

Musical notation for measures 4-6 of the first movement. Measure 4 contains a half note G4, a quarter note A4, a quarter note B4, and a quarter note C5. Measure 5 contains a half note D5, a quarter note E5, a quarter note F5, and a quarter note G5. Measure 6 contains a half note A5, a quarter note B5, a quarter note C6, and a quarter note B5. The piece concludes with a double bar line and repeat signs.

## 2. Presto

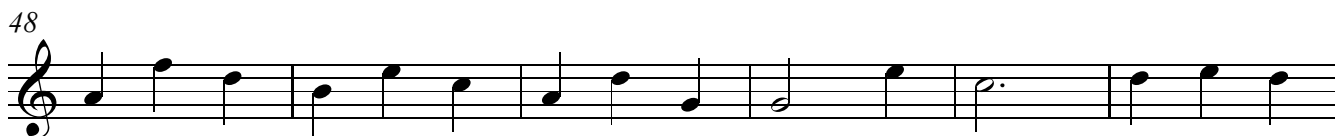
Musical notation for measures 7-18 of the second movement. The piece begins with a 4-measure rest in 3/4 time, followed by a melodic line. Measure 10 contains a 3-measure rest. The notation includes various note values and rests.

Musical notation for measures 19-26 of the second movement. The music continues with a melodic line consisting of eighth and sixteenth notes.

Musical notation for measures 27-33 of the second movement. The music continues with a melodic line consisting of eighth and sixteenth notes.

Musical notation for measures 34-40 of the second movement. Measures 34-35 are the first ending, and measures 36-37 are the second ending. The notation includes first and second endings and a repeat sign.

Musical notation for measures 41-48 of the second movement. The music concludes with a melodic line consisting of eighth and sixteenth notes.



## 4. Allegrissimo presto

