

Bass

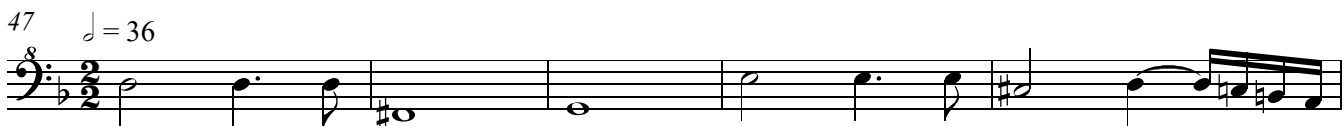
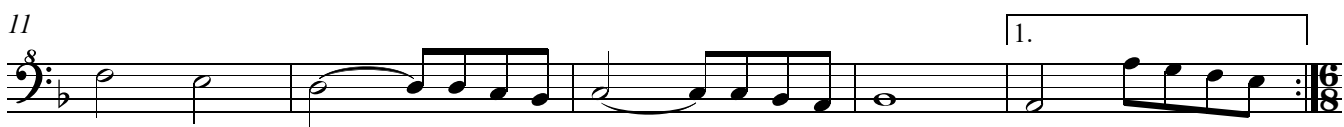
Suite No. 4

Johann Caspar Ferdinand Fischer (1656-1746)

1. Overture

Arr. by Alan Lane

$\text{♩} = 36$



Bass

2. Entree

♩ = 60

7

13

16

21

3. Rondeau

♩ = 100

Fine

10

20

29

D.S. al Fine

39

♩ = 72

4. Gavotte

Musical staff 1 for Gavotte, starting with a double bar line and repeat sign. The key signature has one flat (B-flat) and the time signature is 2/2. The notes are: G2, A2, B2, C3, D3, E3, F3, G3, A3, B3, C4, D4, E4, F4, G4, A4, B4, C5.

4

Musical staff 2 for Gavotte, starting with a double bar line and repeat sign. The notes are: G3, A3, B3, C4, D4, E4, F4, G4, A4, B4, C5, D5, E5, F5, G5, A5, B5, C6.

9

Musical staff 3 for Gavotte, starting with a double bar line and repeat sign. The notes are: G4, A4, B4, C5, D5, E5, F5, G5, A5, B5, C6, D6, E6, F6, G6, A6, B6, C7.

13

Musical staff 4 for Gavotte, starting with a double bar line and repeat sign. The notes are: G5, A5, B5, C6, D6, E6, F6, G6, A6, B6, C7, D7, E7, F7, G7, A7, B7, C8.

♩ = 92

5. Menuett

Musical staff 1 for Menuett, starting with a double bar line and repeat sign. The key signature has one flat (B-flat) and the time signature is 3/4. The notes are: G2, A2, B2, C3, D3, E3, F3, G3, A3, B3, C4, D4, E4, F4, G4, A4, B4, C5.

6

Musical staff 2 for Menuett, starting with a double bar line and repeat sign. The notes are: G3, A3, B3, C4, D4, E4, F4, G4, A4, B4, C5, D5, E5, F5, G5, A5, B5, C6.

9

Musical staff 3 for Menuett, starting with a double bar line and repeat sign. The notes are: G4, A4, B4, C5, D5, E5, F5, G5, A5, B5, C6, D6, E6, F6, G6, A6, B6, C7.

17

Musical staff 4 for Menuett, starting with a double bar line and repeat sign. The notes are: G5, A5, B5, C6, D6, E6, F6, G6, A6, B6, C7, D7, E7, F7, G7, A7, B7, C8.

♩ = 88

6. Passacaille

Musical staff 1 for Passacaille, starting with a double bar line and repeat sign. The key signature has one flat (B-flat) and the time signature is 3/4. The notes are: G2, A2, B2, C3, D3, E3, F3, G3, A3, B3, C4, D4, E4, F4, G4, A4, B4, C5.

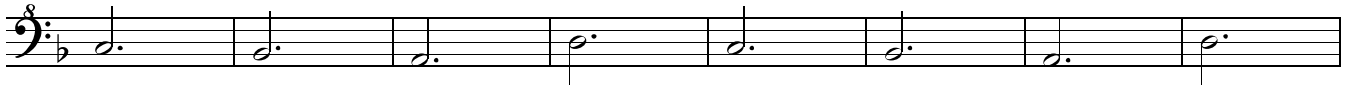
8

Musical staff 2 for Passacaille, starting with a double bar line and repeat sign. The notes are: G3, A3, B3, C4, D4, E4, F4, G4, A4, B4, C5, D5, E5, F5, G5, A5, B5, C6.

15

Musical staff 3 for Passacaille, starting with a double bar line and repeat sign. The notes are: G4, A4, B4, C5, D5, E5, F5, G5, A5, B5, C6, D6, E6, F6, G6, A6, B6, C7.

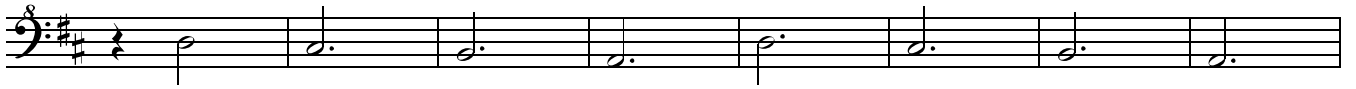
22



30



41



49



61



69



81



93



104

