

Prophetiae Sibyllarum

Tenor

Orlando di Lasso
(1532-1594)

♩ = 96

Carmina chromatica



10



18



22



1

I. Sibylla Persica



8



15



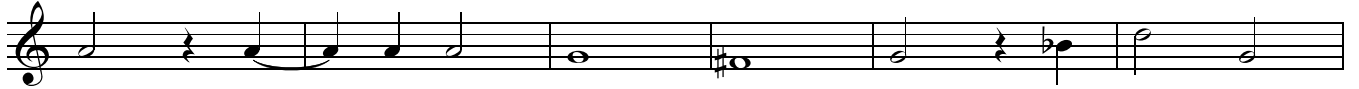
22



29



37



43



Tenor

2

II. Sibylla Libyca

1

Musical staff 1 for II. Sibylla Libyca, measures 1-9. Treble clef, 4/4 time signature. Key signature: one flat (B-flat). The melody begins with a whole note B-flat, followed by a half note D, and continues with a series of eighth and quarter notes.

10

Musical staff 2 for II. Sibylla Libyca, measures 10-16. Treble clef, 4/4 time signature. Key signature: one flat (B-flat). The melody continues with eighth and quarter notes, including a triplet of eighth notes in measure 15.

17

Musical staff 3 for II. Sibylla Libyca, measures 17-23. Treble clef, 4/4 time signature. Key signature: one flat (B-flat). The melody continues with quarter and eighth notes.

24

Musical staff 4 for II. Sibylla Libyca, measures 24-30. Treble clef, 4/4 time signature. Key signature: one flat (B-flat). The melody continues with quarter and eighth notes, including a sharp sign in measure 25.

31

Musical staff 5 for II. Sibylla Libyca, measures 31-38. Treble clef, 4/4 time signature. Key signature: one flat (B-flat). The melody continues with quarter and eighth notes.

39

Musical staff 6 for II. Sibylla Libyca, measures 39-46. Treble clef, 4/4 time signature. Key signature: one flat (B-flat). The melody continues with quarter and eighth notes.

47

Musical staff 7 for II. Sibylla Libyca, measures 47-54. Treble clef, 4/4 time signature. Key signature: one flat (B-flat). The melody concludes with a double bar line and a key signature change to two flats (B-flat and E-flat).

III. Sibylla Delphica

1

Musical staff 1 for III. Sibylla Delphica, measures 1-9. Treble clef, 4/4 time signature. Key signature: two flats (B-flat and E-flat). The melody begins with a whole note B-flat, followed by a half note D, and continues with a series of eighth and quarter notes. A second measure number '2' is placed above the staff in measure 5.

10

Musical staff 2 for III. Sibylla Delphica, measures 10-16. Treble clef, 4/4 time signature. Key signature: two flats (B-flat and E-flat). The melody continues with quarter and eighth notes.

17

Musical staff 3 for III. Sibylla Delphica, measures 17-24. Treble clef, 4/4 time signature. Key signature: two flats (B-flat and E-flat). The melody continues with quarter and eighth notes.

25

Musical staff 4 for III. Sibylla Delphica, measures 25-32. Treble clef, 4/4 time signature. Key signature: two flats (B-flat and E-flat). The melody continues with quarter and eighth notes.

33

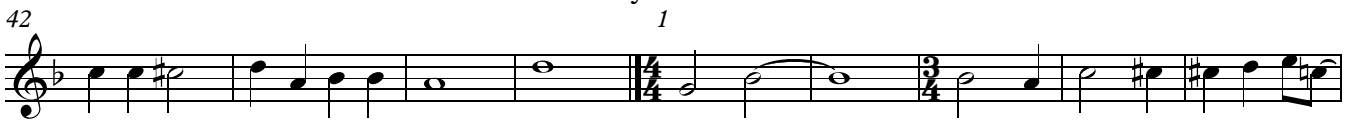
Musical staff 5 for III. Sibylla Delphica, measures 33-40. Treble clef, 4/4 time signature. Key signature: two flats (B-flat and E-flat). The melody continues with quarter and eighth notes.



IV. Sibylla Cimmerica



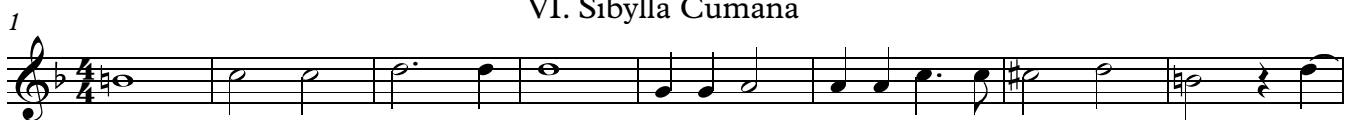
V. Sibylla Samia



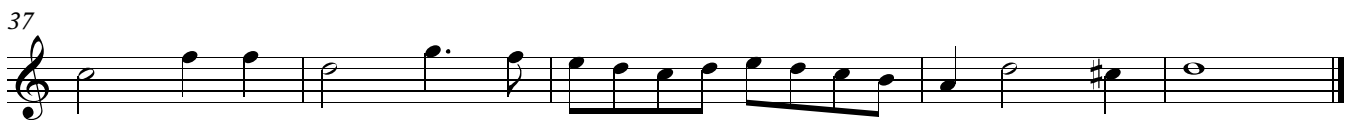
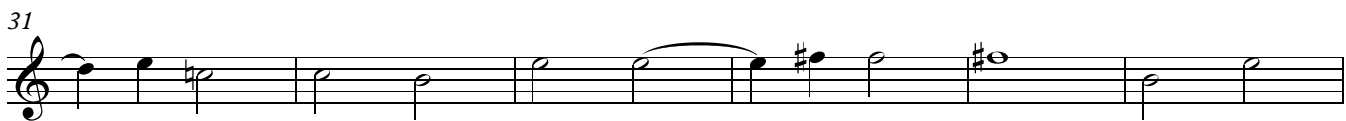
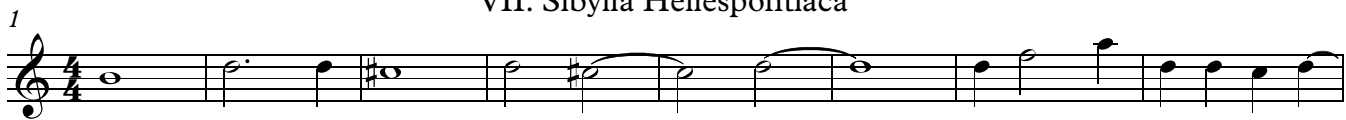
Tenor

4

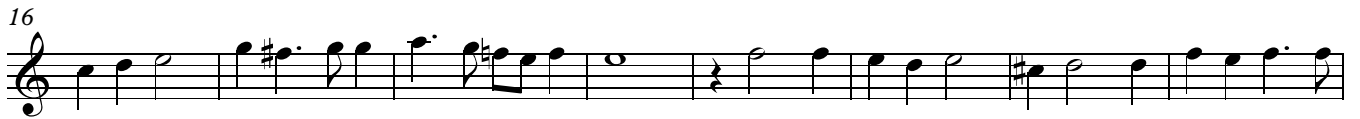
VI. Sibylla Cumana



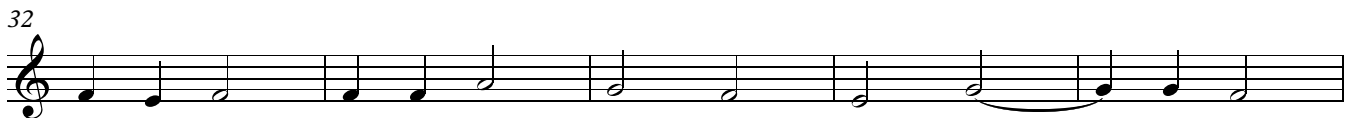
VII. Sibylla Hellespontiacae



1 VIII. Sibylla Phrygia



1 IX. Sibylla Europaea



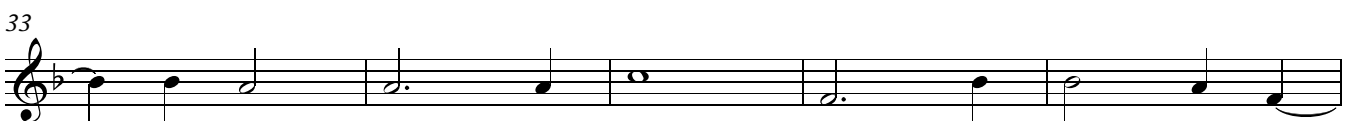
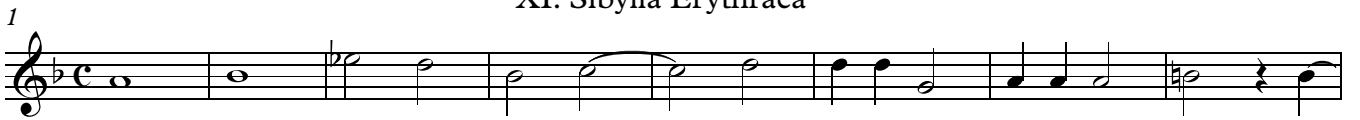
Tenor

6

X. Sibylla Tiburtina



XI. Sibylla Erythraea



XII. Sibylla Agrippa

1

1

7

7

13

13

19

19

24

24

30

30

35

35

41

41

46

46