

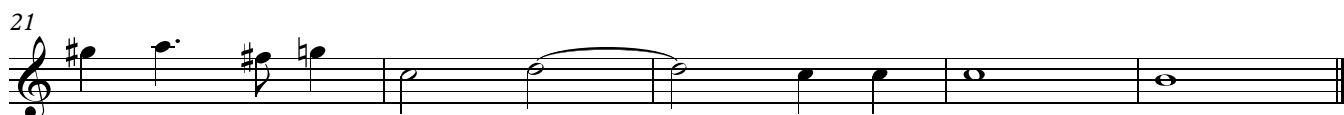
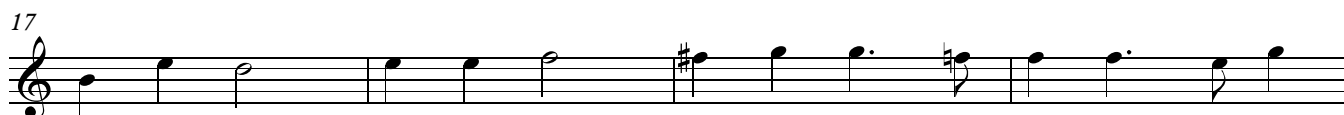
Treble/Tenor

Prophetiae Sibyllarum

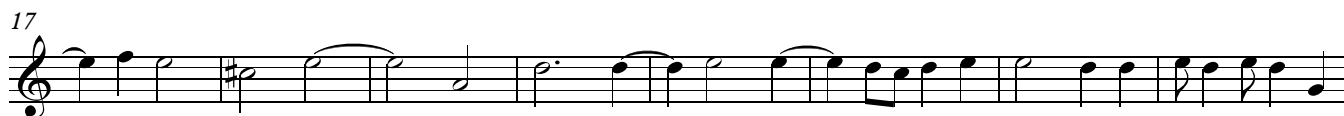
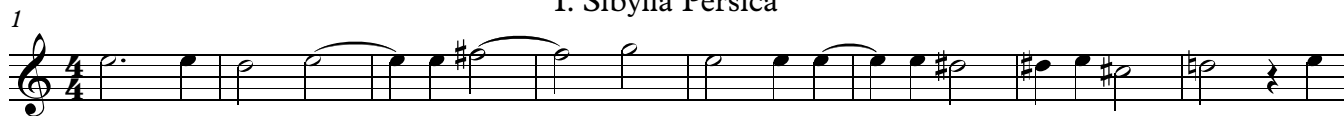
Orlando di Lasso
(1532-1594)

Carmina chromatica

♩ = 96



I. Sibylla Persica



Treble/Tenor
II. Sibylla Libyca

1

9

17

25

33

41

48

Detailed description: This section contains seven systems of musical notation for the piece 'II. Sibylla Libyca'. Each system begins with a measure number (1, 9, 17, 25, 33, 41, 48) and a treble clef. The music is written in 4/4 time. The first system starts with a whole rest followed by a half note G4, then a quarter note A4, and a half note B4. The second system continues with a half note C5, a quarter note B4, and a half note A4. The third system features a half note G4, a quarter note F4, and a half note E4. The fourth system has a half note D4, a quarter note C4, and a half note B3. The fifth system begins with a half note A3, a quarter note G3, and a half note F3. The sixth system starts with a half note E3, a quarter note D3, and a half note C3. The seventh system concludes with a half note B2, a quarter note A2, and a half note G2, ending with a double bar line.

III. Sibylla Delphica

1

10

17

25

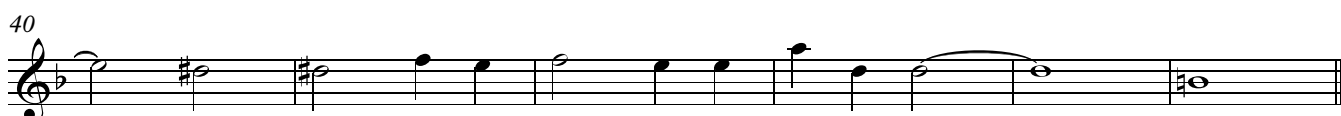
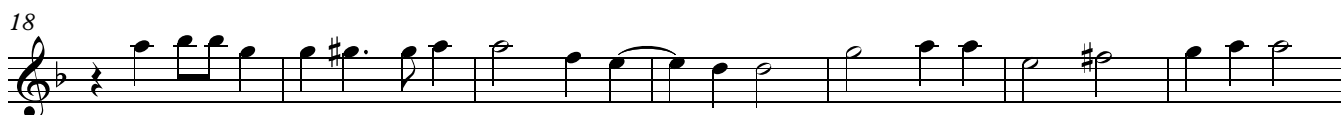
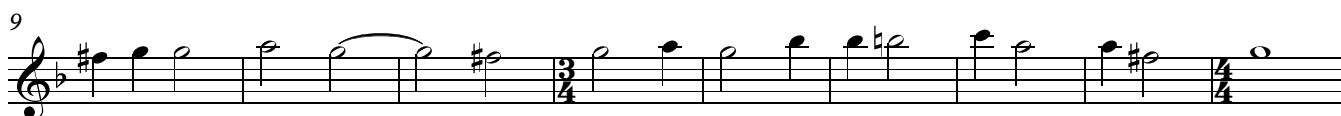
33

41

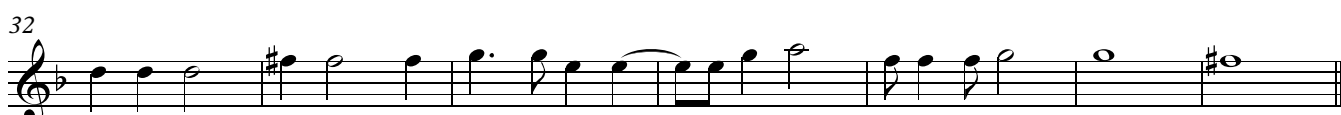
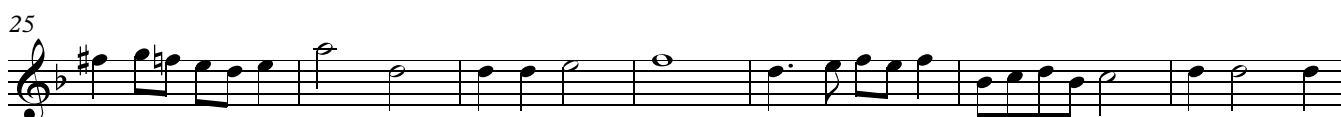
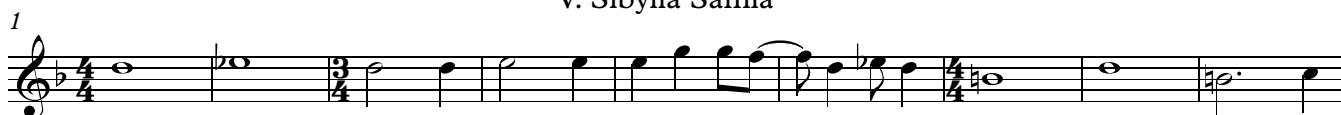
Detailed description: This section contains six systems of musical notation for the piece 'III. Sibylla Delphica'. Each system begins with a measure number (1, 10, 17, 25, 33, 41) and a treble clef. The music is written in 4/4 time. The first system starts with a whole rest followed by a triplet of eighth notes G4, A4, and B4. The second system continues with a half note C5, a quarter note B4, and a half note A4. The third system features a half note G4, a quarter note F4, and a half note E4. The fourth system has a half note D4, a quarter note C4, and a half note B3. The fifth system begins with a half note A3, a quarter note G3, and a half note F3. The sixth system starts with a half note E3, a quarter note D3, and a half note C3, ending with a double bar line.

Treble/Tenor
IV. Sibylla Cimmerica

3



V. Sibylla Samia

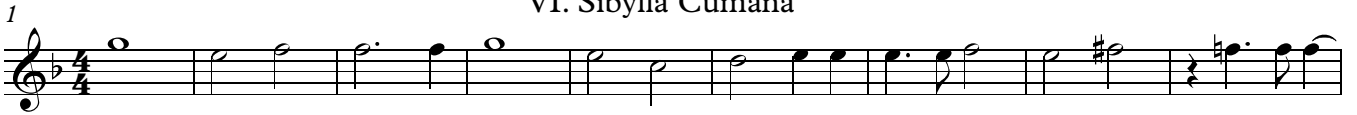


Treble/Tenor

4

VI. Sibylla Cumana

1



Musical staff 1 for VI. Sibylla Cumana, starting at measure 1. The key signature has one flat (B-flat) and the time signature is 4/4. The melody begins with a half note G4, followed by quarter notes A4, B4, and C5. It continues with quarter notes D5, E5, and F5, then a half note G5. The piece concludes with a half note G5, a quarter rest, and quarter notes F5, E5, and D5.

10



Musical staff 2 for VI. Sibylla Cumana, starting at measure 10. The melody begins with quarter notes D5, C5, and B4, followed by quarter notes A4, G4, and F4. It continues with quarter notes E4, D4, and C4, then a half note B3. The piece concludes with quarter notes A3, G3, and F3, followed by a half note E3.

18



Musical staff 3 for VI. Sibylla Cumana, starting at measure 18. The melody begins with a half note G3, followed by quarter notes F3, E3, and D3. It continues with quarter notes C3, B2, and A2, then a half note G2. The piece concludes with quarter notes F2, E2, and D2, followed by a half note C2.

27



Musical staff 4 for VI. Sibylla Cumana, starting at measure 27. The melody begins with quarter notes D4, C4, and B3, followed by quarter notes A3, G3, and F3. It continues with quarter notes E3, D3, and C3, then a half note B2. The piece concludes with quarter notes A2, G2, and F2, followed by a half note E2.

35



Musical staff 5 for VI. Sibylla Cumana, starting at measure 35. The melody begins with quarter notes D4, C4, and B3, followed by quarter notes A3, G3, and F3. It continues with quarter notes E3, D3, and C3, then a half note B2. The piece concludes with quarter notes A2, G2, and F2, followed by a half note E2.

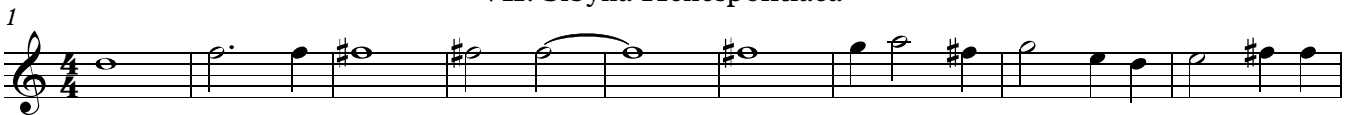
40



Musical staff 6 for VI. Sibylla Cumana, starting at measure 40. The melody begins with quarter notes D4, C4, and B3, followed by quarter notes A3, G3, and F3. It continues with quarter notes E3, D3, and C3, then a half note B2. The piece concludes with quarter notes A2, G2, and F2, followed by a half note E2.

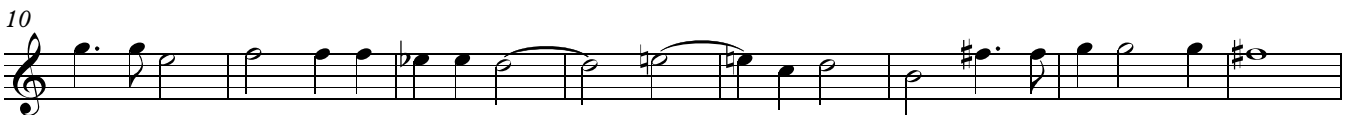
VII. Sibylla Hellespontiacae

1



Musical staff 1 for VII. Sibylla Hellespontiacae, starting at measure 1. The key signature has one flat (B-flat) and the time signature is 4/4. The melody begins with a half note G4, followed by quarter notes A4, B4, and C5. It continues with quarter notes D5, E5, and F5, then a half note G5. The piece concludes with a half note G5, a quarter rest, and quarter notes F5, E5, and D5.

10



Musical staff 2 for VII. Sibylla Hellespontiacae, starting at measure 10. The melody begins with quarter notes D5, C5, and B4, followed by quarter notes A4, G4, and F4. It continues with quarter notes E4, D4, and C4, then a half note B3. The piece concludes with quarter notes A3, G3, and F3, followed by a half note E3.

18



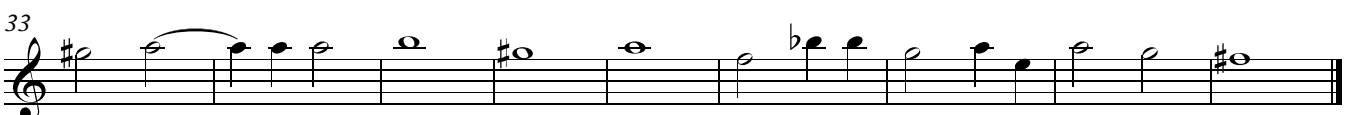
Musical staff 3 for VII. Sibylla Hellespontiacae, starting at measure 18. The melody begins with quarter notes D4, C4, and B3, followed by quarter notes A3, G3, and F3. It continues with quarter notes E3, D3, and C3, then a half note B2. The piece concludes with quarter notes A2, G2, and F2, followed by a half note E2.

26



Musical staff 4 for VII. Sibylla Hellespontiacae, starting at measure 26. The melody begins with quarter notes D4, C4, and B3, followed by quarter notes A3, G3, and F3. It continues with quarter notes E3, D3, and C3, then a half note B2. The piece concludes with quarter notes A2, G2, and F2, followed by a half note E2.

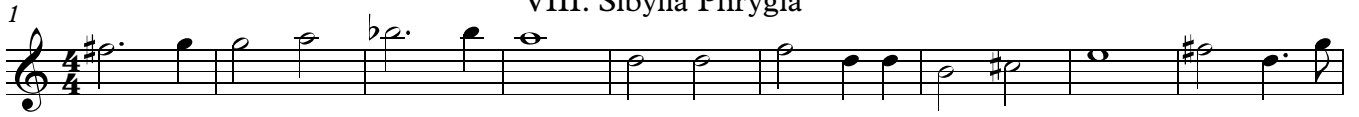
33



Musical staff 5 for VII. Sibylla Hellespontiacae, starting at measure 33. The melody begins with quarter notes D4, C4, and B3, followed by quarter notes A3, G3, and F3. It continues with quarter notes E3, D3, and C3, then a half note B2. The piece concludes with quarter notes A2, G2, and F2, followed by a half note E2.

VIII. Sibylla Phrygia

1



Musical staff 1 for Sibylla Phrygia, starting at measure 1. The key signature has one sharp (F#) and the time signature is 4/4. The melody begins with a dotted half note G4, followed by quarter notes A4, B4, and C5. A fermata is placed over the C5 note. The staff continues with a series of quarter and eighth notes, ending with a quarter note G4.

10



Musical staff 10 for Sibylla Phrygia, starting at measure 10. The melody continues with quarter and eighth notes, including a measure with a quarter rest. It ends with a quarter note G4.

18



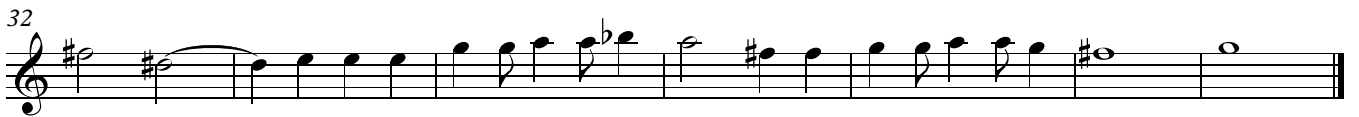
Musical staff 18 for Sibylla Phrygia, starting at measure 18. The melody continues with quarter and eighth notes, including a measure with a quarter rest. It ends with a quarter note G4.

26



Musical staff 26 for Sibylla Phrygia, starting at measure 26. The melody continues with quarter and eighth notes, including a measure with a quarter rest. It ends with a quarter note G4.

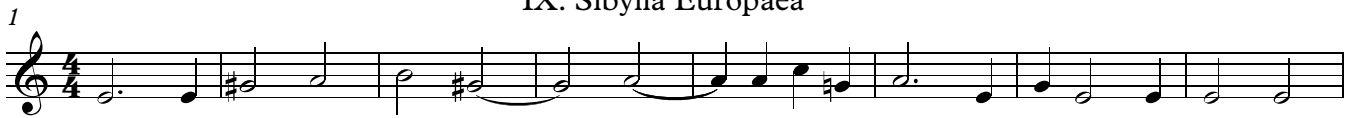
32



Musical staff 32 for Sibylla Phrygia, starting at measure 32. The melody continues with quarter and eighth notes, including a measure with a quarter rest. It ends with a quarter note G4.

IX. Sibylla Europaea

1



Musical staff 1 for Sibylla Europaea, starting at measure 1. The key signature has one sharp (F#) and the time signature is 4/4. The melody begins with a dotted half note G4, followed by quarter notes A4, B4, and C5. A fermata is placed over the C5 note. The staff continues with a series of quarter and eighth notes, ending with a quarter note G4.

9



Musical staff 9 for Sibylla Europaea, starting at measure 9. The melody continues with quarter and eighth notes, including a measure with a quarter rest. It ends with a quarter note G4.

17



Musical staff 17 for Sibylla Europaea, starting at measure 17. The melody continues with quarter and eighth notes, including a measure with a quarter rest. It ends with a quarter note G4.

24



Musical staff 24 for Sibylla Europaea, starting at measure 24. The melody continues with quarter and eighth notes, including a measure with a quarter rest. It ends with a quarter note G4.

32



Musical staff 32 for Sibylla Europaea, starting at measure 32. The melody continues with quarter and eighth notes, including a measure with a quarter rest. It ends with a quarter note G4.

36

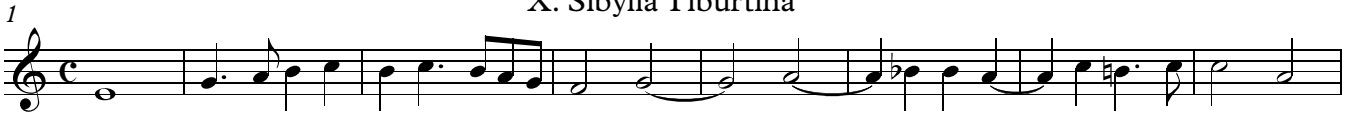


Musical staff 36 for Sibylla Europaea, starting at measure 36. The melody continues with quarter and eighth notes, including a measure with a quarter rest. It ends with a quarter note G4.

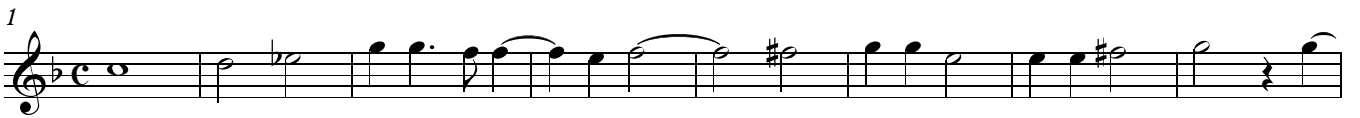
Treble/Tenor

6

X. Sibylla Tiburtina



XI. Sibylla Erythraea

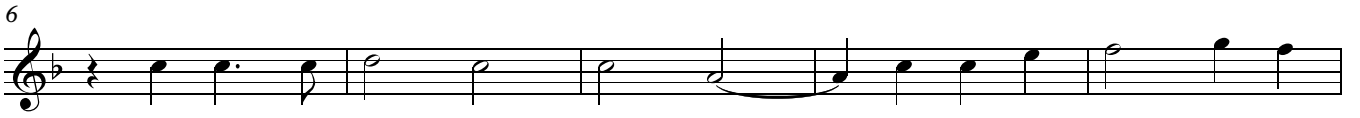


XII. Sibylla Agrippa

1



6



11



18



25



31



37



42



46



49

