

Lay a Garland

G. Bass 1

Robert Lucas de Pearsall (1795-1856)

$\text{♩} = 48$



Lay _____ a gar - land on _____ her hearse

9



of dis - - mal yew _____

17



Maid - ens, wil-low bran - - - ches wear, say _____

24



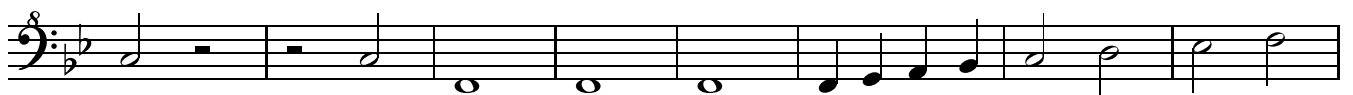
_____ she di - ed true. Her love _____

34



_____ was false but she _____ was

42



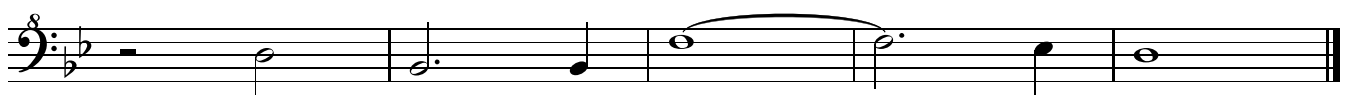
firm up - on _____ her bu-ried bo - dy

50



lie, thou gen - - - tle earth

54



thou gen - tle, gen - - - tle earth.