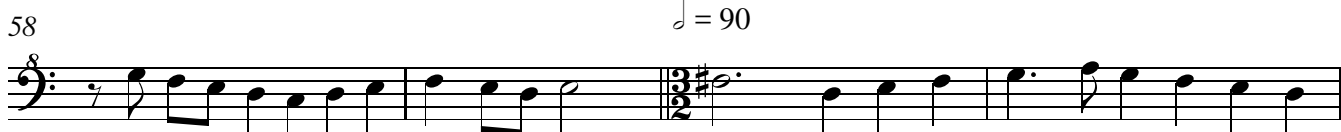
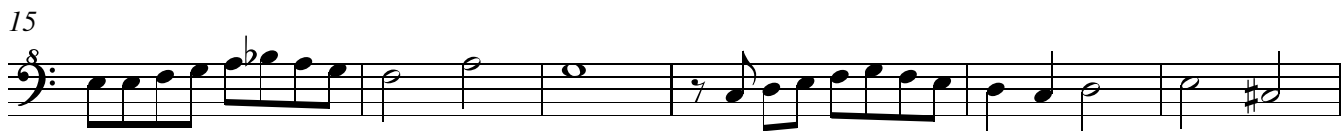


Bass Recorder

Canzona francese chromatica

Gio. Maria Trabaci (c. 1615)

$\text{♩} = 60$



68

Musical staff for measure 68, featuring a bass clef, a key signature of one flat (B-flat), and a common time signature. The melody starts with a quarter rest, followed by a sequence of eighth notes: G2, A2, B2, C3, D3, E3, F3, G3. This is followed by a dotted half note G3 with a flat, then a dotted quarter note F3, and finally two quarter notes E3 and D3.

72

Musical staff for measure 72, featuring a bass clef, a key signature of one flat (B-flat), and a common time signature. The melody starts with a whole note G2, followed by two measures of whole rests. The final measure contains two quarter notes G2 and A2, followed by a quarter note B2 with a flat, a quarter note C3 with a flat, and a quarter note D3 with a sharp.

77 $\text{♩} = 60$

Musical staff for measure 77, featuring a bass clef, a key signature of one flat (B-flat), and a 3/2 time signature. The tempo marking is $\text{♩} = 60$. The melody starts with a quarter rest, followed by eighth notes G2, A2, B2, and C3. This is followed by eighth notes D3 with a flat and E3 with a flat, then a quarter note F3 with a sharp, and finally a sixteenth-note triplet of G3, F3, and E3.

83

Musical staff for measure 83, featuring a bass clef, a key signature of one flat (B-flat), and a common time signature. The melody starts with a quarter rest, followed by eighth notes G2, A2, B2, and C3. A slur covers the next two notes, D3 and E3, which are quarter notes. This is followed by eighth notes F3, G3, A3, and B3, with a slur over the last two notes, C4 and B3.

88 $\text{♩} = 90$

Musical staff for measure 88, featuring a bass clef, a key signature of one flat (B-flat), and a 3/2 time signature. The tempo marking is $\text{♩} = 90$. The melody starts with eighth notes G2, A2, B2, and C3, followed by eighth notes D3 with a flat and E3 with a flat. A double bar line with a repeat sign follows. The second part of the measure starts with a quarter note G2 with a sharp, followed by quarter notes A2, B2, C3, D3, E3, and F3.

92

Musical staff for measure 92, featuring a bass clef, a key signature of one flat (B-flat), and a common time signature. The melody consists of quarter notes G2, A2, B2, and C3, followed by quarter notes D3 with a sharp and E3 with a sharp. This is followed by eighth notes F3 with a flat and G3 with a flat, and finally a quarter note A3.

98

Musical staff for measure 98, featuring a bass clef, a key signature of one flat (B-flat), and a common time signature. The melody starts with a quarter rest, followed by a sequence of eighth notes: G2, A2, B2, C3, D3, E3, F3, G3. This is followed by a dotted half note G3 with a flat, then a dotted quarter note F3, and finally two quarter notes E3 and D3.

102

Musical staff for measure 102, featuring a bass clef, a key signature of one flat (B-flat), and a common time signature. The melody starts with a whole note G2, followed by two measures of whole rests. The final measure contains two quarter notes G2 and A2, followed by a quarter note B2 with a flat, a quarter note C3 with a flat, and a quarter note D3.

106 $\text{♩} = 60$

Musical staff for measure 106, featuring a bass clef, a key signature of one sharp (F-sharp), and a 3/2 time signature. The tempo marking is $\text{♩} = 60$. The melody starts with eighth notes G2, A2, B2, and C3, followed by eighth notes D3 with a sharp and E3 with a sharp. A slur covers the next two notes, F3 and G3, which are quarter notes. This is followed by a quarter rest, then eighth notes A2, B2, and C3, and finally a quarter note D3.

112

Musical staff for measure 112, featuring a bass clef, a key signature of one sharp (F-sharp), and a common time signature. The melody starts with eighth notes G2, A2, B2, and C3, followed by eighth notes D3 with a flat and E3 with a flat. This is followed by eighth notes F3, G3, A3, and B3, with a slur over the last two notes, C4 and B3. The final measure contains a quarter note G3.

117

Musical staff for measure 117, featuring a bass clef, a key signature of one flat (B-flat), and a common time signature. The melody starts with eighth notes G2, A2, B2, and C3, followed by eighth notes D3 with a flat and E3 with a flat. A slur covers the next two notes, F3 and G3, which are quarter notes. This is followed by eighth notes A2, B2, and C3, and finally a quarter note D3.